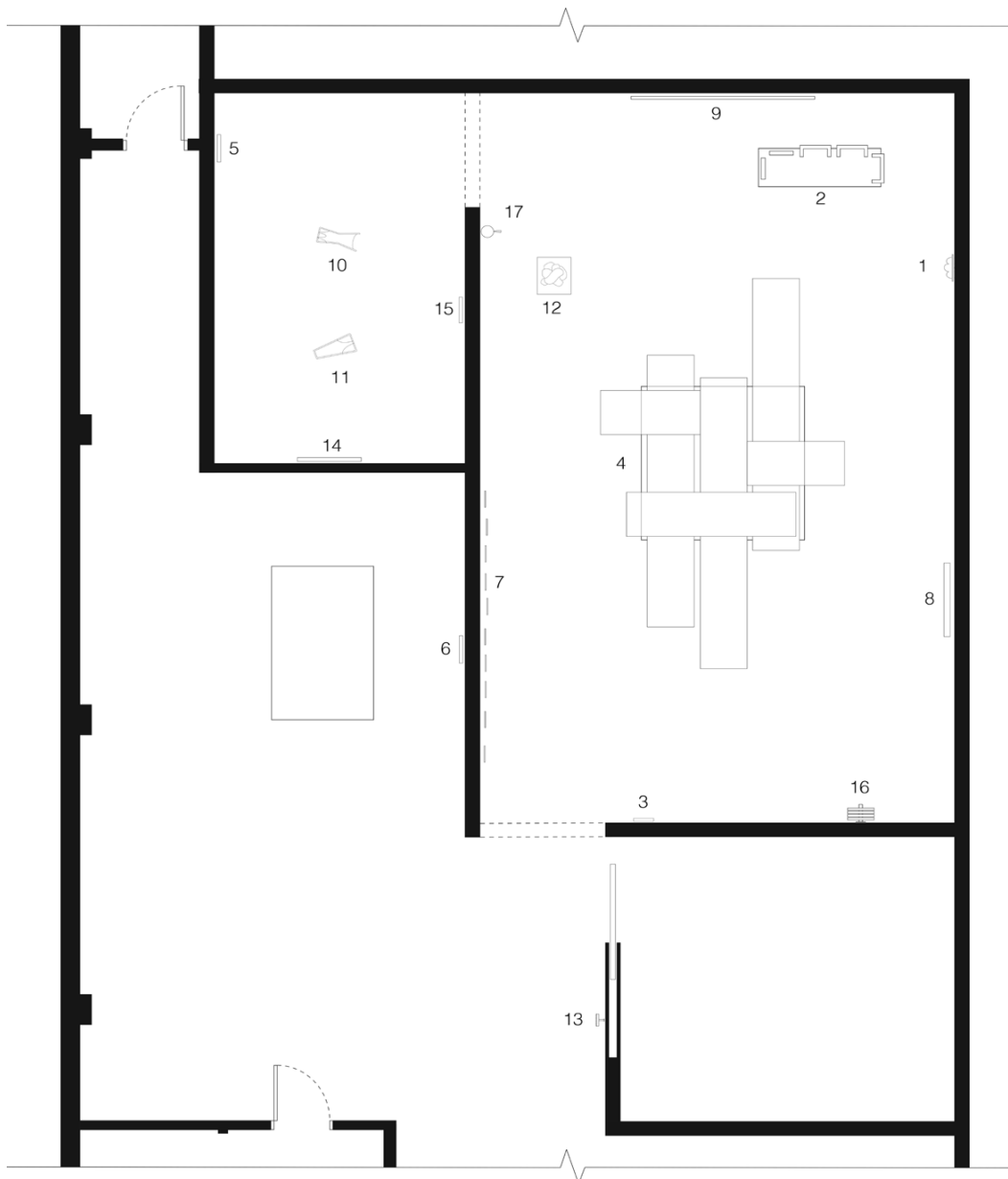


TOUCHPIECE Checklist:



1. Kevin Beasley, *Untitled*, 2016, Resin, du-rags and underwear on canvas, 50 x 20.5 x 9.25"
2. Andrea Branzi, *Settee from "Domestic Animal"*, 2008, Birch, wood, 34 x 71 x 23.5"
3. Hans Breder, *Coralville Studio*, 1970, Vintage gelatin silver print, 11 x 14"
4. Tom Burr, *Shades of Green*, 2011, Window shades and plywood, 172.83 x 196.85 x 7.87"
5. Talia Chetrit, *Jeans*, 2016, Silver gelatin print, 24 x 16.5"
6. Talia Chetrit, *Plastic*, 2016, Inkjet print, 26 x 17"
7. Shannon Ebner, *TOUCHPIECE*, 2017, 10 Ultrachrome Prints mounted to aluminum, 15 x 146" overall
8. Shannon Ebner, *Blank Field*, 2009, Chromogenic print, 63 x 48"
9. Paul Lee, *Climb*, 2017, Washcloths, ink, cotton thread, aluminum rods, metal hoops, 86 x 116 x 1"
10. Hannah Levy, *Untitled*, 2016, Steel, latex, zipper, 34 x 18 x 36.5"
11. Hannah Levy, *Untitled*, 2016, Steel, latex, zipper, 20 x 18 x 37"
12. Sarah Lucas, *NUD 19*, 2009, Tights, fluff, wire, 16 x 22 x 49" overall
13. Donald Moffett, *Lot 112816 (spiral hole, pewter)*, 2016, Oil on linen, wood panel support with steel tubing, 12.5 x 7.5 x 6.5"
14. Adam Putnam, *Untitled (The Drop 1)*, 2014, Black and white photograph, 40 x 30"
15. Heather Rasmussen, *Untitled (lemons, stacked)*, 2013, Pigment print, 20 x 16"
16. Davina Semo, *I IMPOSED ON MYSELF AN ATTITUDE OF ABSOLUTE DETACHMENT*, 2017, Painted metal folding chairs, steel pipe and plate, 18 x 38 x 16.5"
17. Kishio Suga, *A State of Direction*, 2006, Wood, water-based paint, 12 3/16 x 4 3/8 x 8 1/4"